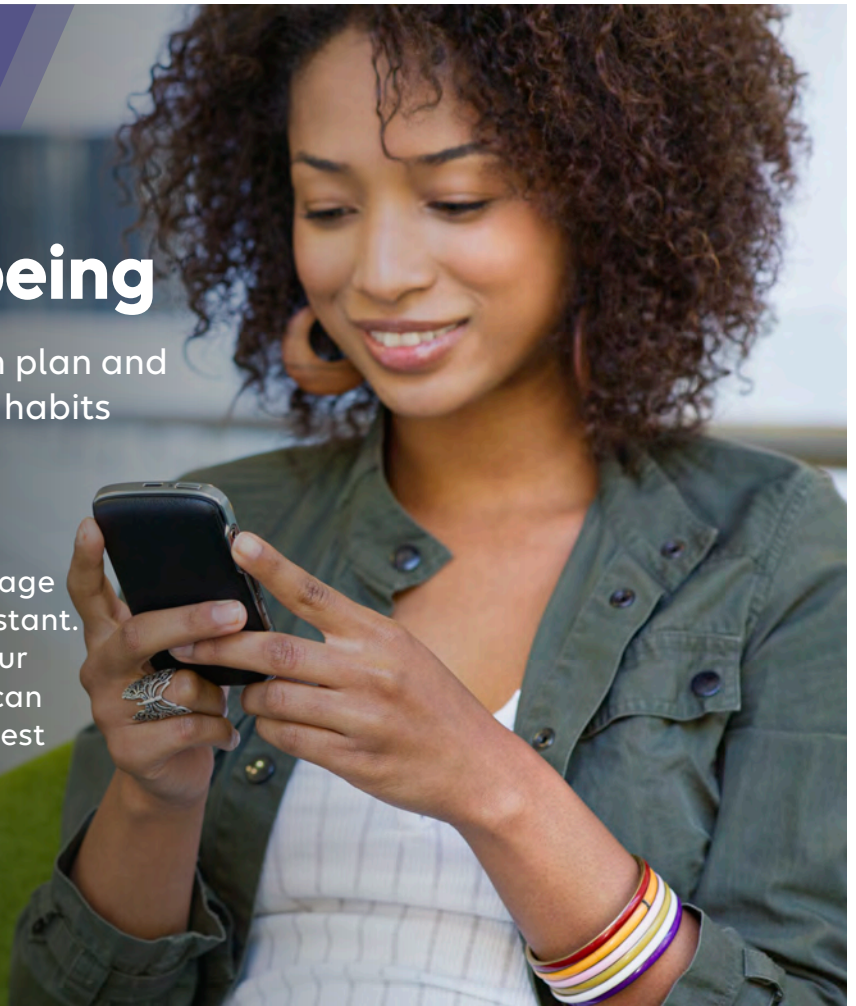


maximus

Engage Wellbeing

Make the most of your health plan and find support for your healthy habits

Maximus employees can use Engage as their personalized health assistant. It can help you take charge of your health plan and benefits so you can be confident you're making the best decisions for your health and wellbeing.



Access your plan

See all of your medical and pharmacy benefits in one place, including your ID card.



Find care

Search for doctors in your plan, read reviews from patients, and get directions to the nearest urgent care.



Discover health and wellness programs

Learn more about programs like 24/7 NurseLine, ConditionCare, Future Moms, and Aduro Human Performance Coaching.

Everyone can Engage

You don't have to be an Anthem member to download and use the **Engage Wellbeing** app on your device from Google Play™ or the App Store®. Sign up today at engage-wellbeing.com or download the mobile app.

Brought to you by

